

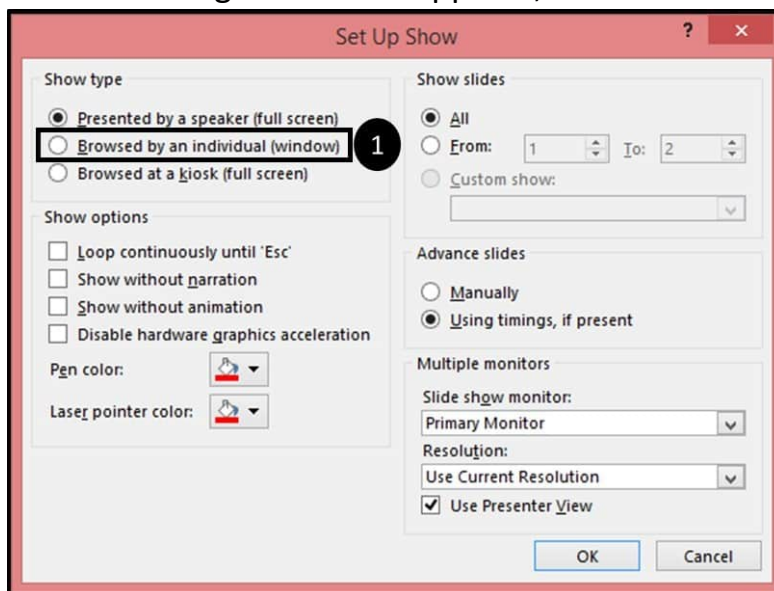
## How To Run Two PowerPoint Presentations Simultaneously

(Please make sure that the A/V System is showing “Computer 1” on one projector and “Computer 2” on the other projector. The computer should also be running in “Extended” Mode)

1. Open both of your PowerPoint Presentations
2. On your first presentation, open the Set Up Slide Show dialog box



- a. Click the Slide Show tab (1)
  - b. Select the Set Up Slide Show command (2).
3. In the dialogue box that appears, select “Browsed by an individual (window)”



4. Repeat the same steps for your second PowerPoint file.
5. Run your slide show and resize it
  - a. Once you've selected the Browsed by an individual (window) option, simply run your slideshow and resize your window(s) to fit your screen. You can also drag the PowerPoint to the individual projection screen on which you want to show your presentation.
  - b. Remember you will need to start each slideshow individually, starting one does not automatically start the other.